

OILFREE

The special feature of this newly developed knocker is broad-band coverage of the impact force adjustment range and interval adjustment range. This has been made possible by an operating pressure of 2 to 7.5 bar. The impact force can be set pneumatically and/or also mechanically. The knocker can thus be used very flexibly.

Pneumatic impact force control:
By setting the pressure range between 2 and 7.5 bar.

Mechanical impact force control:
By fitting and setting the threaded rod with lock nut, it is possible to restrict the stroke of the piston, thus reducing the impact force.



The knocker is supplied with a base plate used to attach the knocker and transmit the impact force. The knocker housing and knocker base plate are made of aluminium. The impact plate (integrated in the base plate) is made of special-purpose impact-resistant plastic.

Intermittent compressed air knockers can be used to dislodge material adhering to container walls (e.g. silos, hoppers, filter outlets, reactors and pipes).

The knockers can be used in wet areas, in explosion-hazard areas or in open air.

PERFORMANCE DATA

	working pressure	work / knock	impuls / knock	weight	air consumption / knock
model	bar	Nm	Ns	kg	l
FKL-50si	2 - 7,0	5 - 15	1 - 3,5	1,85	0,1 - 0,3
FKL-100si	3 - 7,5	0 - 60	0 - 10,5	4,5	0,5 - 1,1
FKL-150si	4 - 7,0	0 - 110	0 - 28,5	9,5	1,2 - 1,7
FKL-200si	4 - 7,5	0 - 200	0 - 57,5	14,8	2,2 - 3,3

Data obtained with a Kistler 3-Axis Dynamometer on a heavy laboratory test block and displayed by a Kistler control monitor (COMO).

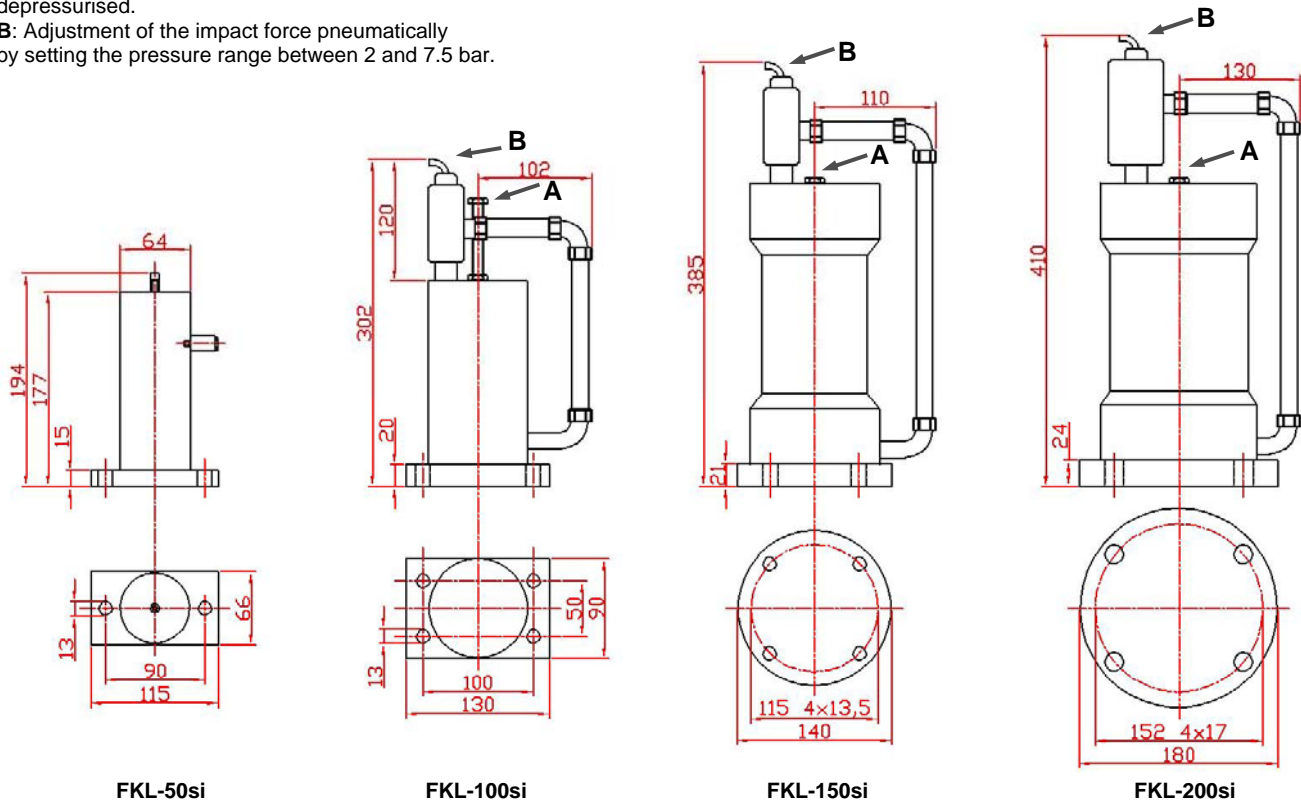


www.aldak.de • info@aldak.de

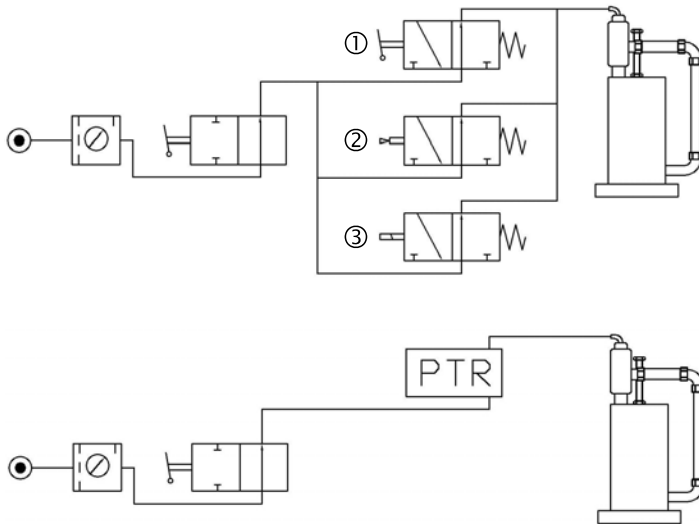
DIMENSIONS in mm

A: Adjustment of the impact force mechanically by fitting and setting the threaded rod with lock nut. Always screw in or unscrew the system depressurised.

B: Adjustment of the impact force pneumatically by setting the pressure range between 2 and 7.5 bar.



Standard installation for Series FKL-si:



The control system is the responsibility of the customer: *

- air pressure supply
- maintenance unit (with or without oiler)
- manual valve
- ① 3/2-way-manual valve (normally open)
- ② 3/2-way-pneumatic valve (normally open)
- ③ 3/2-way-magnetic valve (normally open)
- pneumatic knocker FKL-50/100/150/200si

Pneumatic intermittent control with a PTR: **

- air pressure supply
- maintenance unit (with or without oiler)
- manual valve
- PTR
- pneumatic knocker FKL-50/100/150/200si

* The control function may be performed by

- process control system
- time-lag relay
- switch (On/Off)

** This system has a high impact frequency. It is also possible to control several units.

We reserve the right to improve, modify or withdraw specifications or products without notice or obligation.

www.aldak.de • info@aldak.de