

## stainless steel

(turbine vibrator of the GT-series)



The turbine vibrators of the GT-...-RF series depends on the classic GT- series (golden turbine) except the body and the end plate. They are made of stainless steel, so that the hole outer surface is stainless steel. The vibrators conform to current international noise regulations under factory test conditions (60 to 70 dBA).

A high speed range and eccentric working moments are combined in these vibrators to produce a powerful vibration. It is designed by the centrifugal force of the positive and negative unbalanced moments in the rotor. The rotor is supported on two heavy duty, prelubricated, matched shielded bearings: A special long life grease ensures a long working life. The inner and outer raceways of the bearings are designed so that the bearings can be easily replaced.

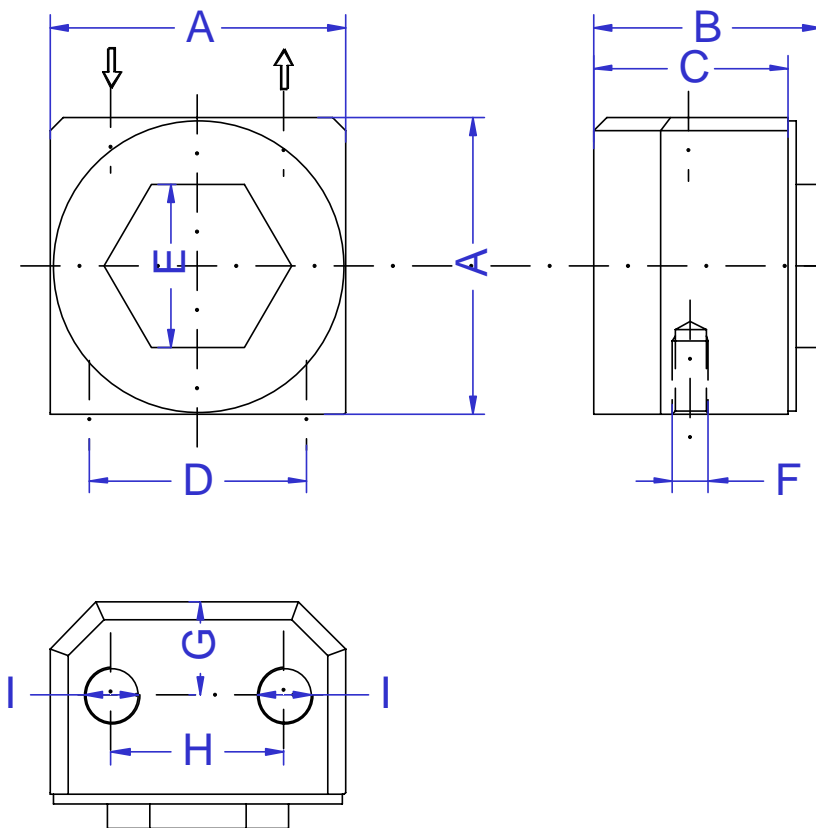
Performance data									
model	frequency min <sup>-1</sup>			power N			air consumption l / min		
	2 bar	4 bar	6 bar	2 bar	4 bar	6 bar	2 bar	4 bar	6 bar
GT-10-RF	27.000	33.000	37.000	800	1400	2400	46	80	112
GT-16-RF	20.000	23.000	27.500	1700	2500	3800	120	200	290
GT-25-RF	14.000	17.000	19.500	2500	4200	5700	185	325	455

Data obtained with a Kistler 3-Axis Dynamometer on a heavy laboratory test block and displayed by a Kistler control monitor (COMO). Frequency and force will decrease on a less rigid mount.

[www.aldak.de](http://www.aldak.de) • [info@aldak.de](mailto:info@aldak.de)

The bottom of the vibrator body has two metric thread holes to fit the vibrator easily. The air in- and outlet are designed as pipe thread BSP type (British Standard Pipe) but will accept US NPT (National Pipe Thread) that is conical and has one extra turn per inch. So you can easily equip the vibrator with silencers or an exhaust hose. The temperature shouldn't exceed 140°C (280°F). The end plate of the vibrator are can be removed to change the bearings if necessary.

dimensions in mm										Weight
Model	A	B	C	D	E	F	G	H	I	kg
<b>GT - 10 - RF</b>	49.0	38.0	32.0	36.0	27.0	M 6	15.5	28.5	G 1/8"	0.525
<b>GT - 16 - RF</b>	64.0	45.0	39.0	48.0	36.0	M 8	20.5	39.0	G ¼"	1.002
<b>GT - 25 - RF</b>	78.0	55.0	49.0	60.0	50.0	M 10	27.5	50.0	G ¼"	1.807



We reserve the right to improve, modify or withdraw specifications or products without notice or obligation.

www.aldak.de • info@aldak.de